



WallShark Parts Installation Guide

SINGLE MOUNT PLUG

Snaps in place for using a single center mount only. Once inserted it cannot be removed.

WallShark DRIVER

Attaches to your drill. Slides onto center of the WallShark parts to perform the repair.

INCLUDED SCREWS

8 screws are included. Only use the supplied screws to avoid damage and for best results.

WALL PLUG

Threaded plug with rotating internal screw boss array for attaching bracket.

WALL CUTTER

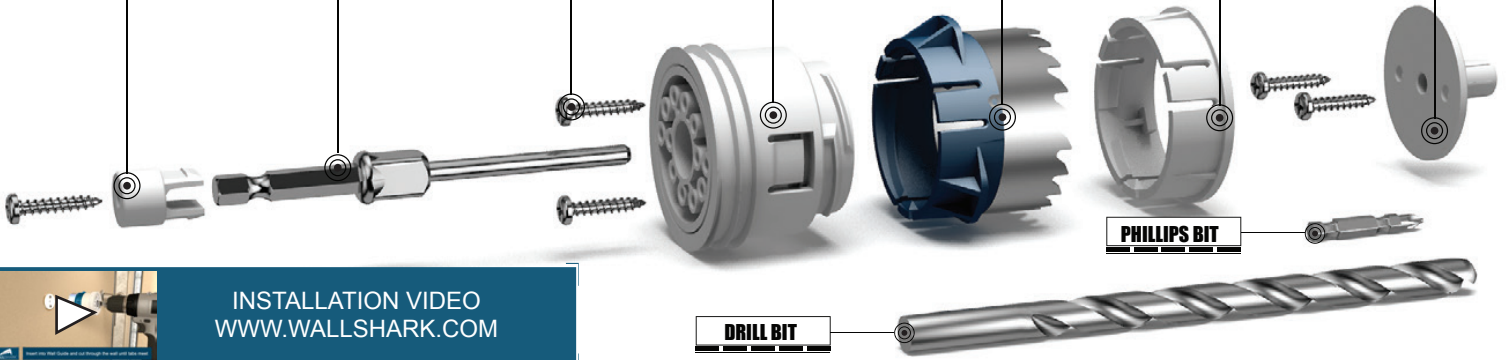
Cuts through drywall and stops when the cut is complete creating a hole for the wall plug.

WALL SANDER

Removes layers of paint and drywall texture to help the wall plug lay flush to the surface.

WALL GUIDE

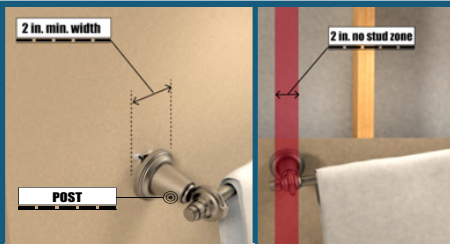
Guides your drill to keep the WallShark perpendicular & straight during installation.



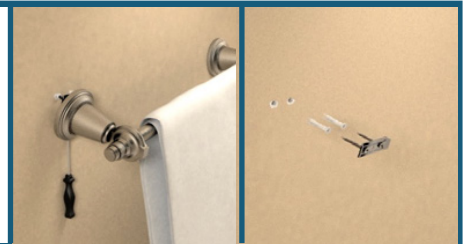
INSTALLATION VIDEO
WWW.WALLSHARK.COM

CAUTION - BEFORE YOU START: WALLSHARK IS FOR USE ON DRYWALL/SHEETROCK REPAIRS ONLY. Do not use for repairs on wood, brick, tile, lath and plaster or plasterboard. If a stud is within 1 inch of your post bracket center point, you will need to chisel away 1/2" of the stud (which can easily be done) or you'll have to find an alternative to this product. WALLSHARK IS APPROXIMATELY 1.8 INCHES WIDE, INSTALLED. Make sure that your cover post will completely cover this dimension.

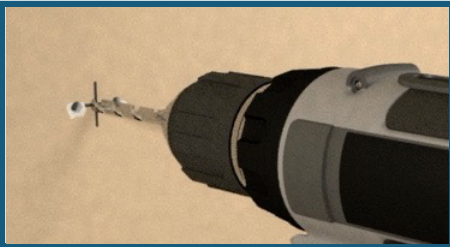
1 A 2-inch post is required to cover WallShark. Don't use if there is a stud behind the post



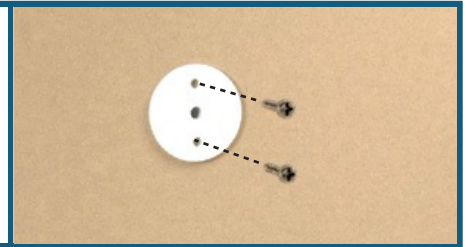
2 Remove wall anchor cover post, then remove debris and all loose particles from the wall surface



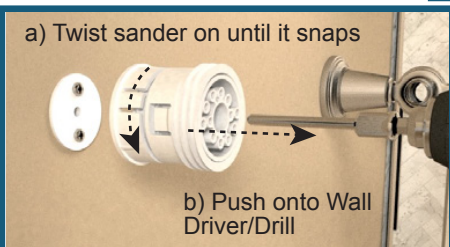
3 Mark the exact center of desired bracket location and drill a hole with included drill bit



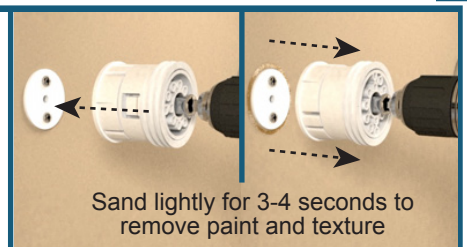
4 Clear debris from hole, then insert Wall Guide and attach with included screws



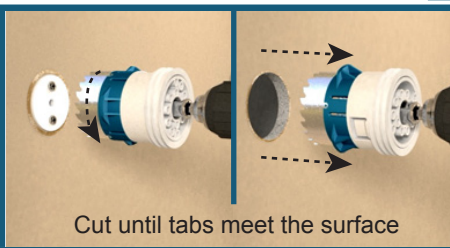
5 Insert Wall Driver into drill, then twist the Wall Sander on to the Wall Plug



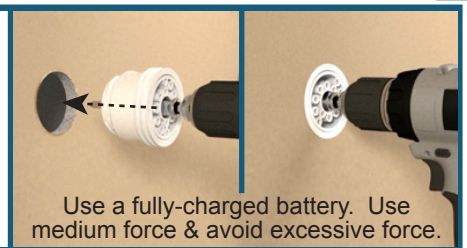
6 Insert into guide hole & keep the sander flat on the surface while sanding lightly for 3-4 sec.



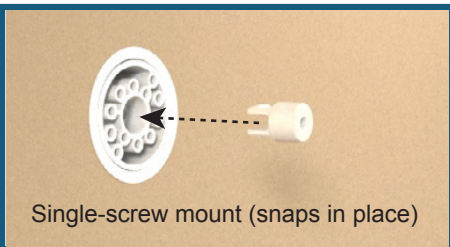
7 Remove the sander and twist cutter on snugly; with light force, cut hole until tabs meet the wall surface



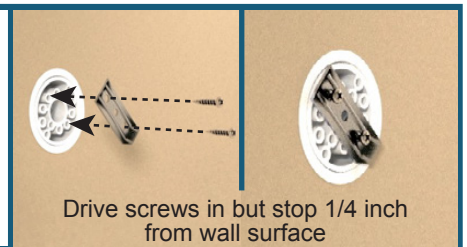
8 Keeping the drill very straight, insert into hole & drive in with medium force until flush with wall



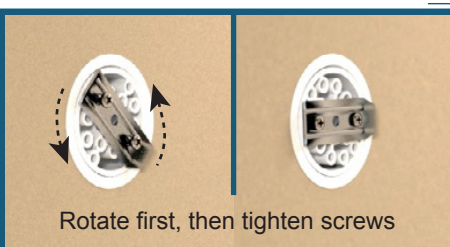
9 Insert center plug mount for single-hole mount (only if needed) or skip to step 10



10 Find proper alignment for your bracket and drive the two screws stopping 1/4 in. from wall



11 Align your bracket by rotating it counter-clockwise only (limit rotations)



12 Re-attach the post to the bracket and secure with screwdriver

